

Delegate Your Network
with Multi-WAN Prowess



Education

Experience Life in High Speed.



Security

End to end data encryption



Office

Keeping Your Office
Connected and Efficient

Manufactured By:

Kenstel Networks Limited 34D Sector 57 HSIIDC Industrial Area Phase 4 Kundli Haryana - 131028.
mail id - kenstel@gmail.com.



HARDWARE SPECIFICATION

Standards

- Dual Band IEEE 802.11ax/ac/n

Processor

- Qualcomm® 1Ghz Quad-Core CPU with dedicated NSS

Antenna

- SMA connectors for external antennas

Tx Power

- 2.4 GHz: 22 dBm | 5 GHz: 24 dBm

Flash Memory

- 122MB

Ethernet

- More than one port can be used as WAN

Supported Data Rates (Mbps):

- 2.4 GHz: Max 600 | 5 GHz: Max 2400

DRAM

- 512 MB
- 5 port 10/100/1000 Base-T/TX auto-sensing & auto MDI/MDI-X.

MIMO

- 802.11n/ac: 2x2 MIMO with 2 Streams

Overall throughput

- Can handle up to 1Gbps or up to 300kpps

CELLULAR SPECIFICATION

Modem	<ul style="list-style-type: none"> • Dual LTE
LTE Through Put	<ul style="list-style-type: none"> • Cat. 4 Max Download 300Mbps , Max Upload 100Mbps • Cat. 6 Max Download 600Mbps ; Max Upload 100Mbps • Both throughput is specified for two modules option (aggregated).
LTE BANDS	<ul style="list-style-type: none"> • B1/ 3/ 5/ 7/ 8/ 20/ 28/ 32/ 38/ 40/ 41/ 42/ 43

CLOUD MANAGEMENT



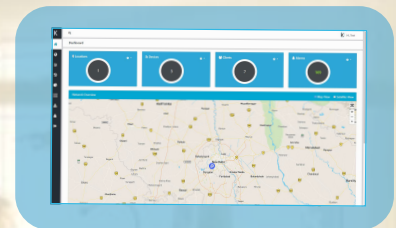
High performance LTE router

Our enterprise LTE Routers are specifically engineered to meet the demanding networking needs of businesses, government agencies, educational institutions, and more.



WLAN Controller

It serves as a centralized platform that enables administrators to configure, monitor, and maintain multiple Routers within the network.



Cloud Management

A powerful and intuitive web-based interface that revolutionizes the way you manage and monitor your network infrastructure.

SOFTWARE SPECIFICATION

<p>Cellular</p>	<ul style="list-style-type: none"> Cellular Status Signal strength (RSSI), Modem Status, IMEI,IMSI, Roaming Status, Operator, Band, PLMN, EARFCN, Preferred Network Type
<p>VPN</p>	<ul style="list-style-type: none"> Ipssec IKEv2, with 76 encryption methods for IPsec (des-md5-dh1, des-md5-dh2, des-md5-dh5, des-md5-dh14,
	<p>PPTP:</p> <ul style="list-style-type: none"> PPTP Support
	<p>L2TP:</p> <ul style="list-style-type: none"> L2tpv3 over ipv4/ipv6 and L2tp over ipsec support.
	<p>GRE:</p> <ul style="list-style-type: none"> Can run multiple gre tunnel over ipv4/ipv6 (L2 and L3 Supported).
	<p>OpenVPN</p> <ul style="list-style-type: none"> 43 encryption methods for open vpn (BF-CBC 128, BF-CFB 128, BF-OFB 128, CAST5-CBC 128, CAST5-CFB 128, CAST5-OFB 128, etc.)

SOFTWARE SPECIFICATIONS

Routing	<ul style="list-style-type: none"> • Static routing, Dynamic routing (BGP, OSPF v2, RIP v1/v2), Policy based routing
Network Protocol	<ul style="list-style-type: none"> • TCP, UDP, IPv4, IPv6, ICMP, , DNS, HTTP, HTTPS, SFTP, FTP, SMTP, SSL/TLS, ARP,, PPP, PPPoE, UPNP, SSH, DHCP, Telnet, SMPP, SMNP.
Wireless	<ul style="list-style-type: none"> • 8 SSIDs for both 2.4GHz and 5GHz radios • WPA2-PSK, WEP,WPA3(WPA3-OWE,SAE,SAE+PSK,WPA3-SuiteB), WPA-EAP, WPA-PSK; AES-CCMP, TKIP, Auto Cipher modes, client separation
Wireless Features	<ul style="list-style-type: none"> • Airtime fairness, Roaming, Wmm,MFP,HS2.0,Band Steering,Layer2 user isolation,STP,Blacklist/Whitelist of Client,
Captive Portal	<ul style="list-style-type: none"> • Multiple Authentication Type(No authentication,Simple Password,Local User,LocalUser with Active Directory,SMS), Customize captive portal.

SOFTWARE SPECIFICATIONS

Qos	<ul style="list-style-type: none">• Bandwidth control over network, userwise bandwidth control
SDN	<ul style="list-style-type: none">• Wan Failover and Load Balancing
Firewall	<ul style="list-style-type: none">• Port Forwarding,Ip Filtering,Mac Filtering,Port Filtering,Url Filtering,NAT,ips,Attack Defense(Flood attack prevention).
Stats	<ul style="list-style-type: none">• Network stats,Cellular Stats,Client Stats.
Management	<ul style="list-style-type: none">• WebUi,Cloud Management,Snmp,tr069.

MECHANICAL SPECIFICATION



Temperature Range

Operating Temp. 0°C to 55°C (32°F to 131°F)



Waterproof & Dustproof

IP60-Rated Enclosure



Humidity (non-condensing)

Operating Humidity 10% to 85%
Non-Condensing



Dimensions

Length-210,Width-130x,Hieght 25 mm