



Education

Experience Life in High Speed.



Security

End to end data encryption



Office

Keeping Your Office Connected and Efficient

HARDWARE SPECIFICATION

Processor

- Qualcomm® 1Ghz Quad-Core CPU with dedicated NSS

Antenna

- SMA connectors for external antennas

Flash Memory

- 122MB

DRAM

- 512 MB

Ethernet

- 5 port 10/100/1000 Base-T/TX auto-sensing & auto MDI/MDI-X.
- More than one port can be used as WAN

GPON Interface

- Upstream: 1.244Gbps Downstream: 2.488 Gbps
- ITU-T G.984.2/ITU-T G.984.3/ITU-TG.988 Class B+
- Min: 0dBm Max: +5dBm
- -27dBm
- -8dBm

MIMO

- 802.11n/ac: 2x2 MIMO with 2 Streams

Overall throughput

- Can handle up to 1Gbps or up to 300kpps

CLOUD MANAGEMENT



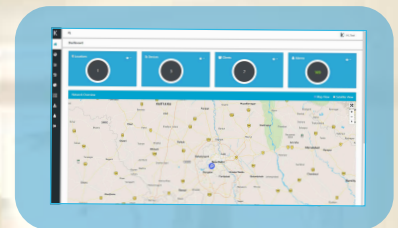
High performance router

Our enterprise LTE Routers are specifically engineered to meet the demanding networking needs of businesses, government agencies, educational institutions, and more.



WLAN Controller

It serves as a centralized platform that enables administrators to configure, monitor, and maintain multiple Routers within the network.



Cloud Management

A powerful and intuitive web-based interface that revolutionizes the way you manage and monitor your network infrastructure.

SOFTWARE SPECIFICATION

VPN	<p>Ipsec</p> <ul style="list-style-type: none"> • IKEv2, with 76 encryption methods for IPsec (des-md5-dh1, des-md5-dh2, des-md5-dh5, des-md5-dh14,
	<p>PPTP:</p> <ul style="list-style-type: none"> • PPTP Support
	<p>L2TP:</p> <ul style="list-style-type: none"> • L2tpv3 over ipv4/ipv6 and L2tp over ipsec support.
	<p>GRE:</p> <ul style="list-style-type: none"> • Can run multiple gre tunnel over ipv4/ipv6 (L2 and L3 Supported).
	<p>OpenVPN</p> <ul style="list-style-type: none"> • 43 encryption methods for open vpn (BF-CBC 128, BF-CFB 128, BF-OFB 128, CAST5-CBC 128, CAST5-CFB 128, CAST5-OFB 128,etc.)
	<p>VXLAN</p> <ul style="list-style-type: none"> • Extend Layer 2 networks over a Layer 3 infrastructure.
Routing	<ul style="list-style-type: none"> • Static routing, Dynamic routing (BGP, OSPF v2, RIP v1/ v2), Policy Based Routing, VRRP, BFD, ISIS, EIGRP, VRF, MPLS, VPLS, NHRP, PIM, ECMP.
Network Protocol	<ul style="list-style-type: none"> • TCP, UDP, IPv4, IPv6, ICMP, DNS, HTTP, HTTPS, SFTP, FTP, SMTP, SSL/TLS, ARP, PPP, PPPoE, UPNP, SSH, DHCP, Telnet, SMPP, SMNP, IGMP(v2/v3)
Captive Portal	<ul style="list-style-type: none"> • Multiple Authentication Type(No Authentication, Simple Password, Local User, Local User with Active Directory, SMS, Voucher, Social Authentication, External Radius Server, Email Authentication and Form Authentication), Customize captive portal

SOFTWARE SPECIFICATIONS

Qos	<ul style="list-style-type: none">• Bandwidth control over network, user wise bandwidth control• Priority Based Qos, FIFO, Fair Queue, Committed Access Rate
SDN	<ul style="list-style-type: none">• Wan Failover and Load Balancing
Firewall	<ul style="list-style-type: none">• Port Forwarding, Ip Filtering, Mac Filtering, Port Filtering, Url Filtering, NAT, ips, Attack Defense(Flood attack prevention).
Stats	<ul style="list-style-type: none">• Network stats,Cellular Stats,Client Stats,Wlan Stats.
Management	<ul style="list-style-type: none">• WebUi,Cloud Management,Snmp,tr069.

MECHANICAL SPECIFICATION



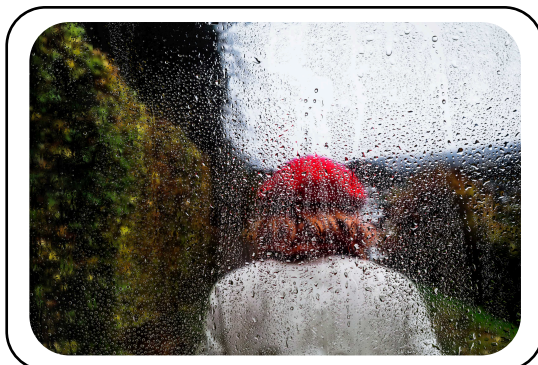
Temperature Range

Operating Temp. 0°C to 55°C (32°F to 131°F)



Waterproof & Dustproof

IP60-Rated Enclosure



Humidity (non-condensing)

Operating Humidity 10% to 85%
Non-Condensing



Dimensions

Length-210,Width-130x,Hieght 25 mm